

Traffic Safety Orientation



Motorcycle & Traffic Safety Program Managers

Shawn R. Olsen, CSP (Oly)
39 081-5683147(comm)/626-3147(dsn)
shawn.r.olsen2.civ@us.navy.mil

Daniela Comiti, Safety Technician
39 081-5684857(comm)/626-4857 (dsn)
daniela.comiti3.ln@us.navy.mil

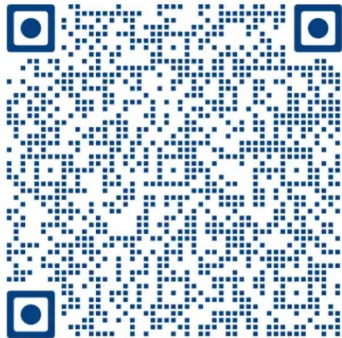
Safety Office: M-NA-NSA-SAFETY@us.navy.mil
Updated 3 OCT2024



SAFETY OFFICE on CAPO - ADMIN III - 1ST FLOOR



- Safety department is located in ADMIN III, behind ADMIN I on Capodichino.
- We're here to help with safety training, motorcycle license and registration or any other safety questions you might have.
- If you see something, say something. Mishaps * Near-Misses or Unsafe/Unhealthful conditions.



NSA Naples Vision: In everything we do, we will challenge ourselves to be the Flagship base in Europe. We will accomplish this through careful planning, professional execution, and intentional communication.

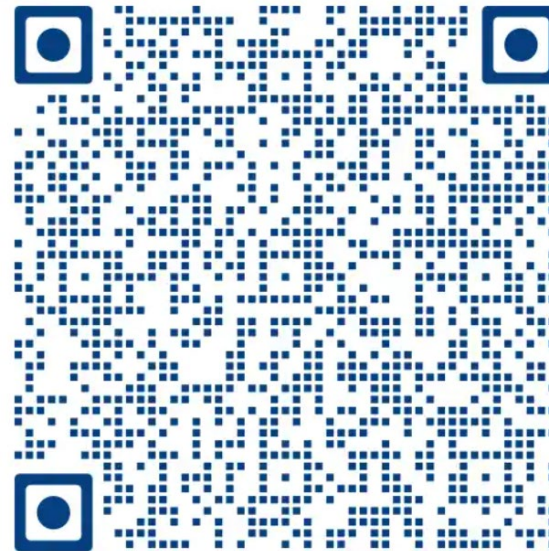
UNCLASSIFIED//FOUO



- See something UNSAFE?

- Report it!

- Send an email directly to the NSA Safety Office by using the QR code below.





SURVIVING NAPLES TRAFFIC

Tips for safer and lower stress driving in Italy, (and Naples).

Last PMV4 fatality was 2019.

Last PMV2 fatality was 2016.

Let's talk about strategies for driving safer in Italy.



APR 24 2007

<https://www.anm.it/>

Airport Express - Bus Service between Naples Capodichino Airport and Naples City Center



AZIENDA
NAPOLETANA
MOBILITÀ S.p.A.

Naples Capodichino Airport to Naples Garibaldi

Naples Capodichino Airport Terminal Bus
Naples Garibaldi

Departure date
Wed, 14 Feb

Book now €5,00

Naples Capodichino Airport to Naples Immacolatella Porta Di Massa

Naples Capodichino Airport Terminal Bus
Naples Immacolatella Porta Di Massa

Departure date
Wed, 14 Feb

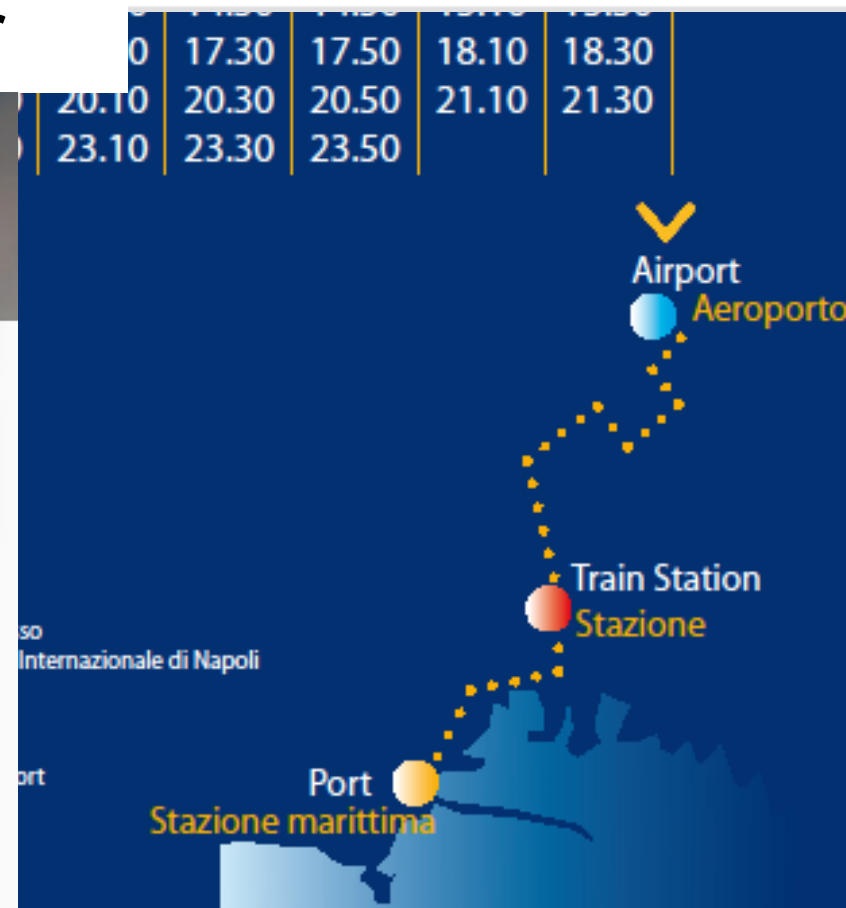
Book now €5,00

Book your ticket in seconds online
and avoid standing in line

- ✓ Official airport partner
- ✓ Mobile ticket accepted, no printing needed
- ✓ Air conditioning and Wifi included
- ✓ Prices include all taxes, and guaranteed service 365 days a year
- ✓ Safer and cheaper than taxis



Our passenger transportation company provides safe
and reliable services for all your travel needs.



line di prima fascia a Napoli e viceversa, su autobus, filobus e treni di ANM, CTP, Circumvesuviana, ...
te, nell'ambito del Comune di Napoli, l'utilizzo combinato su autobus, filobus, funicolari, tram, treni
Consente una sola corsa sulla linea Alibus e su una sola delle funicolari di Centrale, Chiola, Mergollina e

- Traffic is heavy, streets are narrow and crowded.
- Scooters are a popular way to get places faster. They can filter, split traffic and park almost anywhere.
- Driving a car in the city is a challenge with scooters coming from all directions and the line of sight is frequently blocked by illegally parked vehicles.





Things you might see:

- Vehicles stopping on the highway
- Vehicles backing up on the highway
- Flashing lights to pass
- Cars being towed illegally
- People running out of gas
- People getting out of their cars

Other Issues

- Short on-ramps and off-ramps
- 4 vehicles side by side in two lanes
- Close distances
- Slippery surfaces
- Traffic circles



Family of four!!!



YOU'RE GOING TO PARK SOMETIME: WHERE?

***HOW TO PAY:
White Lines = Free
Blue Lines = Pay
Yellow = Permit Only***



***DO NOT PARK IN THE
YELLOW LINES, IT IS
RESTRICTED OR
RESERVED***

WHERE TO PAY FOR PARKING



ALWAYS CHECK THE PARKING SIGNS FOR FEES AND HOURS



PARKING SCRATCH CARDS (GRATTINO) ARE FOUND AT TABACCHI, EDICOLA, BAR, LIDO, OR PARKING AGENT

- ▶ THE FINE FOR NOT DISPLAYING THE GRATTINO OR PARKING TICKET IS 41 EURO. IT IS MANDATORY TO PAY ON THE BLUE LINES. IN SOME AREAS IT IS FREE ON SUNDAYS OR HOLIDAYS

MOST PARKING AREAS ARE SERVED BY PARKING MACHINES

OLD
VERSION,
BUT STILL IN
USE



Cash Only



NEWER
MODELS



Cash or card



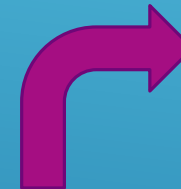
THE NEWER MODELS MAY REQUIRE INPUT OF THE PLATE NUMBER

USE TECHNOLOGY TO PAY FOR PARKING

TELEPASS



EASY PARK APP



TAP & PARK APP



RISPARMIA CON Tap&Park

SCARICA l'app ANM

PAGA LA SOSTA SOLO QUANDO TI SERVE

DIRETTAMENTE DALLO SMARTPHONE
SENZA COSTI AGGIUNTIVI
CON LA POSSIBILITÀ DI PROLUNGARE
LA SOSTA DIRETTAMENTE DAL POSTO
IN CUI TI TROVI

Scarica l'app da
Google Play
App Store
Microsoft

Info: info@tapandpark.com
www.tapandpark.com

www.anm.it



PAY ATTENTION TO THE ZTL SIGNS, THEY ARE TRICKY AND SOMETIMES NOT SO VISIBLE. ONCE YOU ENTERED AN ACTIVE ZTL, YOU WILL BE FINED. (UNLESS YOU PARK IN A GARAGE...)

Naples ZTL Zones: Where you Can't Drive or Park

Many Italian cities have areas of historic significance with **ZTL zones** limiting where you can drive and park. ZTL stands for "Zona Traffico Limitato," or limited traffic zone.



READING ZTL SIGNS IN ITALY

	"LIMITED TRAFFIC ZONE" THE RED CIRCLE MEANS NO CARS ALLOWED
08,00 - 20,00	TIME OF DAY WHEN ZTL IS ACTIVE. IN THIS CASE FROM 8:00AM TO 8:00PM
accesso consentito agli autorizzati muniti di Pass ai sensi dell'O.S. n.36/08	FINE PRINT DETAILING VEHICLES/PERMITS THAT ARE ALLOWED TO ENTER THE ZTL LEGALLY.
divieto valido per autoveicoli -benzina/diesel Euro 0 -fuori provincia PA	

REMEMBER: RENTAL CARS IN ITALY ARE NEVER PERMITTED IN ZTL ZONES DURING THEIR ACTIVE TIMES, REGARDLESS OF A SIGN'S FINE PRINT.



In Naples the Centro Storico, Mezzocannone and Piazza del Gesù are part of the ZTL zone.

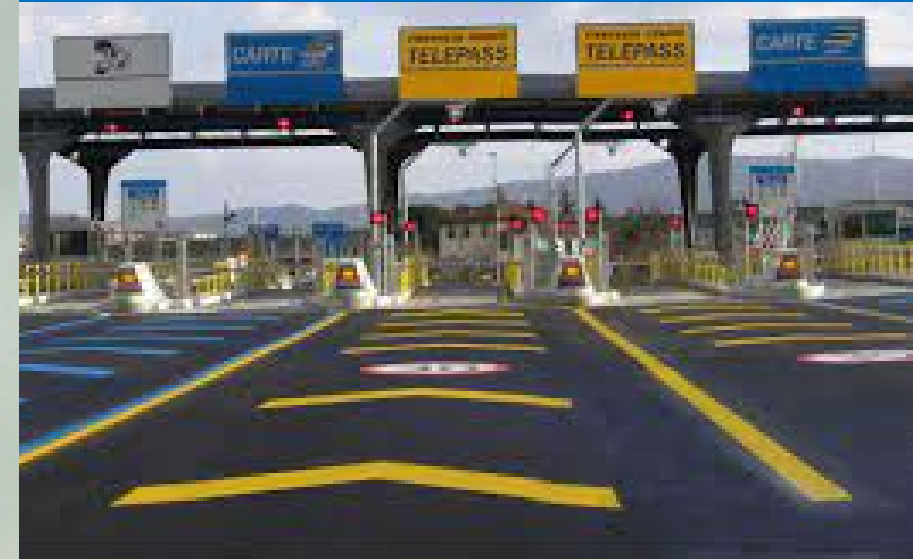
Access to the ZTL is reserved for residents with a special permit and the ZTL is controlled by cameras at the entrances of the zone.

If you are staying at a hotel in one of these zones, you may ask to register your car for permission to drive or park within the ZTL. Most ZTL are active starting 9am and end either 5pm or 10pm Monday through Thursday and 9am through midnight on Friday, Saturday and Sunday.

TYPES OF ROADS IN ITALY:

- ▶ AUTOSTRADA: TOLL ROAD
- ▶ STRADA STATALE (SS): free
- ▶ STRADA PROVINCIALE (SP): similar to strada statale, but usually connects small towns within the same province.
- ▶ TANGENZIALE: TOLL ROAD (Naples) Pay at the exit toll booth; cash, card or Telepass. Cost: one Euro. Pay attention to the “Tutor” cameras, max speed limit 80 kmh, (50mph).

AUTOSTRADA: (TOLL ROAD) Some areas, you pick up your ticket at the toll booth when you enter the road then pay the toll at the point of exit. Around Napoli you pay at the exit without a ticket. **MAXIMUM** speed limit 130 kmh, (80 mph), unless specified.



riservata clienti
TELEPASS





Toll Booth has multiple options:

Cash(one euro locally)

CARTE

ViaCard prepaid
Credit Card

TELEPASS

fast and cheap
available from
NEX Residential Services



Pay attention and plan your stop!

How will I pay?

Cash, Card, TelePass?

It can get confusing for you and adjacent drivers.

Other drivers frequently make sweeping multi-lane changes as they approach.







Polizia Stradale

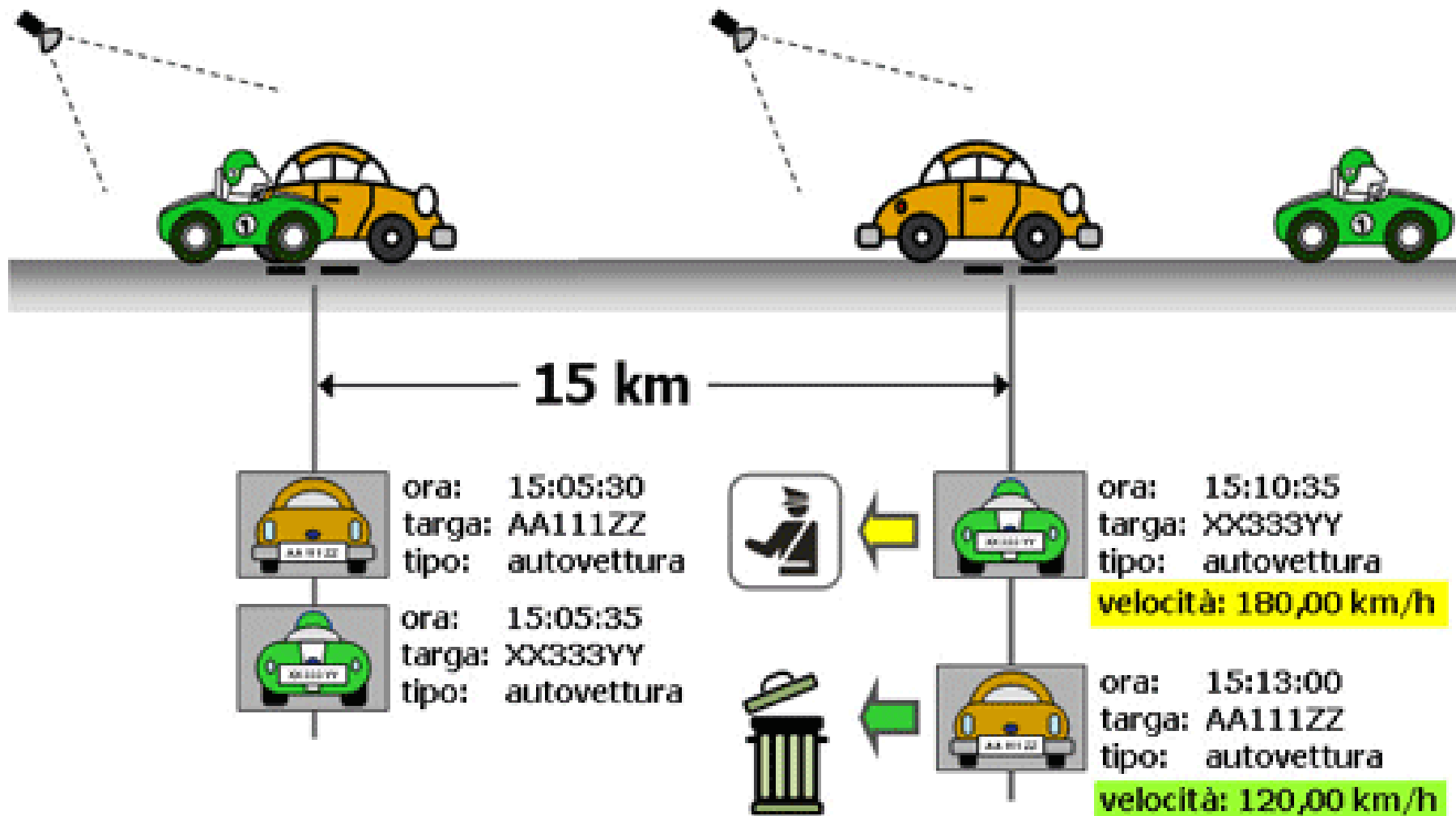
**controllo
elettronico
della velocità
con sistema tutor**



The Speed Control with Tutor System can measure the “instant” speed as the vehicle passes or they can average the speed of the vehicle in a stretch of road between two detection stations.



Come funziona







- ▶ **Italian Driving Laws**
- ▶ **Mobile Phones must be hands free, fines €148 – 594, 1-3 month license suspension for 2nd offense**
- ▶ **Base Policy – no use while driving on the installation. No BT, no hands free.**



ALCOHOL AND DRIVING IN ITALY

10 DUIs in Fiscal Year 24; 3 in one week of September:

- 1) 02 Oct 23: AD (NCTS)
- 2) 10 Nov 23: AD (NSA) -*Member was reduced in rate at NJP*
- 3) 18 Nov 23: CIV (NCIS)
- 4) 02 Jan 24: AD (JFC)
- 5) 25 Feb 24: CIV DEP (NEXCOM)
- 6) 09 Mar 24: CIV DEP (WIWC)
- 7) 19 Mar 24: CIV DEP (COMNAVREG)
- 8) 14 Sep 24: AD (NSA) -Member pending legal action
- 9) 17 Sep 24: AD (NAVFAC)
- 10) 21 Sep 24: AD (NSA) -Member pending legal action


DUI

BAC	Fine	License Suspension	Penalty
.05 < .08	€500 – 2000	90 – 180 days	No confinement
.08 < .15	€800 – 3200	180 – 365 days	Detention up to 3 months
> .15	€1500 – 6000	1 – 2 years	Detention up to 6 months
IF THE DRIVER CAUSES AN ACCIDENT, ALL PUNISHMENTS WILL BE DOUBLED AND THE CAR WILL BE SEIZED FOR 90 DAYS UNLESS THE DRIVER IS NOT THE OWNER OF THE CAR.			
If BAC test denied	€2500 – 10000 €3000 – 12000 (if accident involved)	180 – 2 years	Car seized for 180 days (unless the driver is not the owner)

STRATEGIES FOR AVOIDING DUI:

- Have a plan to get home before you drink.
- Call a taxi or call a friend.
- Don't hesitate to call your chain of command and tell them that you have a problem. There is no punishment for asking for help, and we would rather have the opportunity to get you home safely than have you risk your life or those of others.

Most importantly - We care about our employees' safety

- What strategies do they plan to use to stay safe?
 - Is there something they need to be successful?
 - What can we do as a team to mitigate this extremely dangerous behavior?
- 

- ▶ REQUIRED DOCUMENTS:
- ▶ PATENTE DI GUIDA (DRIVER'S LICENSE)
- ▶ LIBRETTO DI CIRCOLAZIONE (VEHICLE REGISTRATON)
- ▶ ASSICURAZIONE (INSURANCE)
- ▶ MUST BE 18 YRS. OLD TO DRIVE



POLICE MAY PULL YOU OVER ANYTIME. WHEN YOU SEE THE LOLLIPOP, STOP AND HAND THEM THE ABOVE LISTED DOCUMENTS.



SURVIVING NAPLES TRAFFIC



One safety vest per occupant, within reach, not in the trunk.



Warning devices



NSA Naples Vision: In everything we do, we will challenge ourselves to be the Flagship base in Europe. We will accomplish this through careful planning, professional execution, and intentional communication.

UNCLASSIFIED//FOUO

Traffic Safety Orientation



Motorcyclists

- Check in with your command MSR
- **Already endorsed US DL?:**
Still required to complete level II training locally within 60 days of Registration. (offered first Friday of each month) **Civilians: ONE AND DONE**
- **Not yet endorsed?:** Must complete the BRC and BRC2. (level I then level II)
- **Military** must retrain every five years;
- **Schedules and registration in ESAMS** Contact Traffic Safety at Base Safety Department with questions.



May is...
MOTORCYCLE
SAFETY AWARENESS
MONTH #seemotorcycles



NSA Naples Vision: In everything we do, we will challenge ourselves to be the Flagship base in Europe. We will accomplish this through careful planning, professional execution, and intentional communication.

UNCLASSIFIED//FOUO



Motorcycle Riders/Passengers

-Personal Protective Equipment

- MINIMUM 5/8 DOT/ECE** approved helmet (NO Half Helmets)
 - Eye protection
 - Full finger gloves
 - Long Sleeves and pants (no holes)
 - Sturdy over the ankle footwear
-
- **Passengers must be over 7 and be able to touch foot pegs.**
 - **All passengers are required to wear the same Protective Equipment**

POC for registration "Oly" Shawn Olsen DSN 626-3147

Another option for your or your family:



All you need to know for a safe and stress-free driving in Italy, (and Naples).

DRIVING IN ITALY

A few helpful tips to better understand driving in Italy
And understand yourself and your feelings on the road

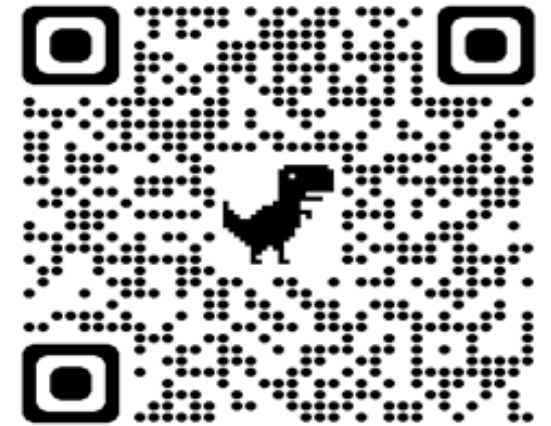
Diana Di Rocco

diana.diroccoowens2.1n@us.navy.mil

Intercultural Relations

Fleet and Family Support Center, Naples, Italy

Driving in Italy can be scary. Don't get too comfortable on base.
You may need to go out there in the economy!



FFSC Naples Facebook



Produced by Diana Di Rocco

MORE TIPS:

- ▶ **REMEMBER:**
- ▶ IN ITALY YOU CANNOT TURN RIGHT ON A RED LIGHT.
- ▶ WHEN YOU MERGE DRIVERS WILL NOT NORMALLY MAKE IT EASY FOR YOU, SO, TAKE YOUR TIME.
- ▶ YES, SPEED LIMIT OFTEN SEEMS OPTIONAL BUT THE CAMERAS ARE WATCHING!!

**DRIVE SAFE, DRIVE COURTEOUS,
ENJOY ITALY!!!**

Driving in the City

When driving in the city, pay attention to the many scooters zipping around.

They will pass you on the right and on the left.

They will drive the wrong way, just because they can ...



Electricity in Italy vs. the US

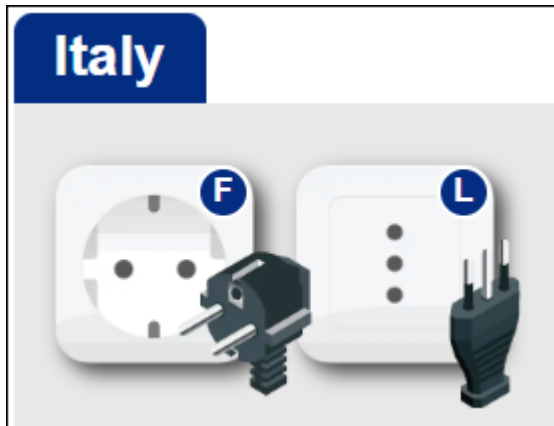


Italy runs 220V – 230V* at 50mHz, while the US and Canada is 120V at 60mHz.

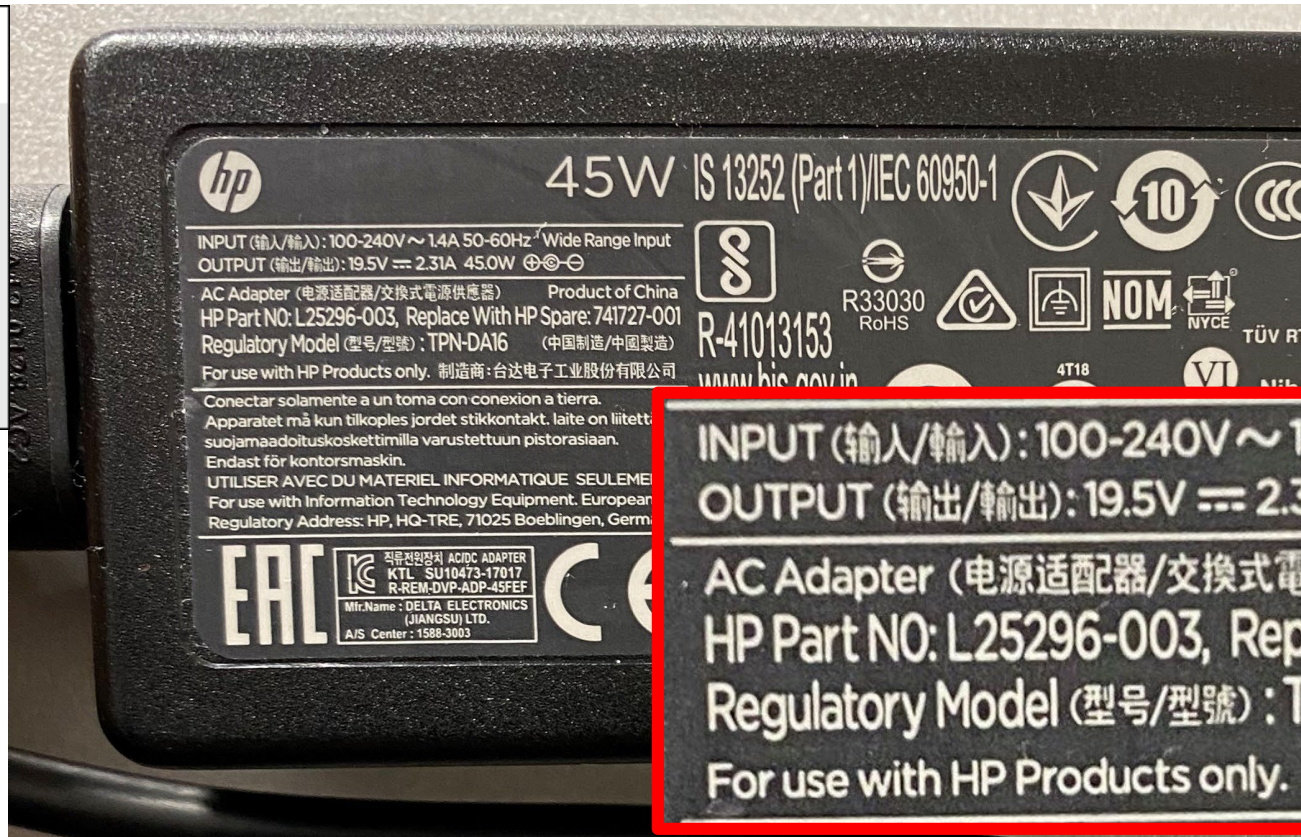
Why does this matter?

You need to check the voltage for any electronics you plan to use in Italy – the input range must include 220V or 230V.

You can find the range on your electronic device's power brick or on the device itself.



In Italy, power plugs and sockets (outlets) of type F and type L are used. The standard voltage is 230 V at a frequency of 50 Hz.



INPUT (輸入/輸入): 100-240V ~ 1.4A 50-60Hz Wide Range Input
OUTPUT (輸出/輸出): 19.5V = 2.31A 45.0W
AC Adapter (電源适配器/交換式電源供應器) Product of China
HP Part NO: L25296-003, Replace With HP Spare: 741727-001
Regulatory Model (型号/型號): TPN-DA16 (中国制造/中國製造)
For use with HP Products only. 制造商: 台达电子工业股份有限公司

NSA Naples Vision: In everything we do, we will challenge ourselves to be the Flagship base in Europe. We will accomplish this through careful planning, professional execution, and intentional communication.

UNCLASSIFIED//FOUO



Be Alert, Stay Safe, Enjoy Bella Napoli

Questions?



Motorcycle & Traffic Safety Program Managers

- **Daniela Comiti, Safety Technician**
 - **39 081-5684857(comm)/626-4857 (dsn)**
 - **daniela.comiti3.ln@us.navy.mil**
 - **Shawn R. Olsen, CSP (Oly)**
 - **39 081-5683147(comm)/626-3147(dsn)**
 - **shawn.r.olsen2.civ@us.navy.mil**
- **Safety Office: M-NA-NSA-SAFETY@us.navy.mil**